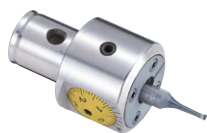


EWN04-7CK1/EWN04-15CK3精镗头

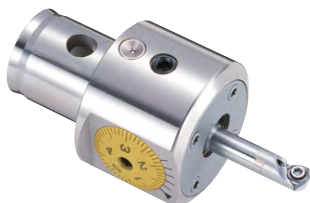
- 最小外径φ18.5mm (EWN04-7CK1)的超小径精镗头。
- 最小微调刻度0.01mm/φ2μm的超精密游标。



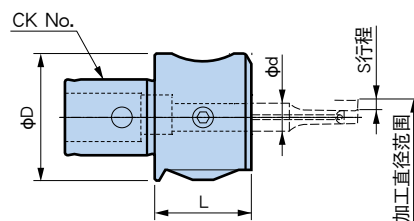
世界最小
外径 φ18.5



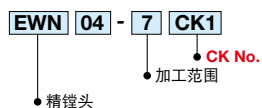
EWN04-7CK1



EWN04-15CK3



● 型号说明



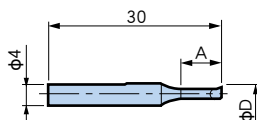
型号	加工直径范围	对应基础柄 CK No.	φD	φd	L	S	最高转速	质量 (kg)
EWN04- 7CK1	1.0 ~ 7	CK1	18.5	4	14	-0.1 ~ +1.05	30,000	0.03
EWN04-15CK3	1.0 ~ 15	CK3	30	7	22	-0.2 ~ +2.0	20,000	0.12

1. 不附带镗杆。



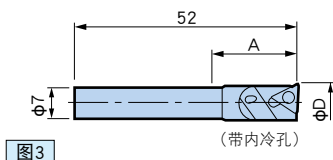
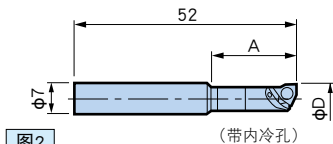
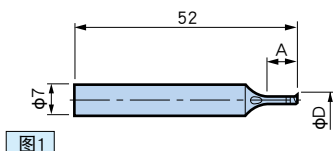
关于基础柄请参阅A71

EWN04-7用镗杆



加工范围 φD	型号	刻印编号	A	对应刀片
1.0 ~ 1.5	ST4W-EB 1 - 3	615.542	3	整体硬质 合金型
1.4 ~ 2.0	-EB 1.5- 5	615.543	5	
1.9 ~ 3.0	-EB 2 - 6	615.544	6	
2.9 ~ 4.0	-EB 3 -10	615.545	10	
3.9 ~ 5.0	-EB 4 -13	615.546	13	
4.9 ~ 7.0	-EB 5 -16	615.547	16	

EWN04-15用镗杆

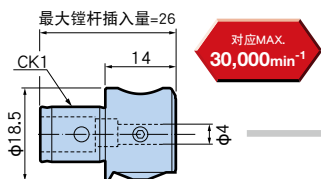


加工范围 φD	图	型号	刻印编号	A	对应刀片
1.0 ~ 1.5	1	ST7W-EB 1 - 3	615.524	3	整体硬质 合金型
1.4 ~ 2.0		-EB 1.5- 5	615.525	5	
1.9 ~ 3.0		-EB 2 - 7	615.501	6	
2.9 ~ 4.0		-EB 3 - 10	615.502	10	
3.9 ~ 5.0		-EB 4 - 13	615.503	13	
4.9 ~ 6.0		-EB 5 - 16	615.504	16	
5.8 ~ 7.0	2	-EB 6 - 20	615.505	20	WC02
6.8 ~ 8.0		-EB 7 - 20	615.506		
7.8 ~ 9.0	3	-EB 8 - 20	615.507	30	TP07
8.8 ~ 10.0		-EB 9 - 20	615.508		
9.8 ~ 12.0		-EB10 - 20	615.509		
11.8 ~ 15.0		-EB12 - 30	615.511		

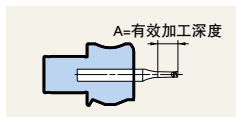
1. 不附带刀片，请另行订购。



EWN04-7CK1 (小径镗系列)



对应镗头 **EWN04-7CK1**
行程 -0.1 ~ +1.05mm



- ST4W-EB 1 - 3
φ1.0~φ1.5
- ST4W-EB1.5- 5
φ1.4~φ2.0
- ST4W-EB 2 - 6
φ1.9~φ3.0
- ST4W-EB 3 -10
φ2.9~φ4.0
- ST4W-EB 4 -13
φ3.9~φ5.0
- ST4W-EB 5 -16
φ4.9~φ7.0

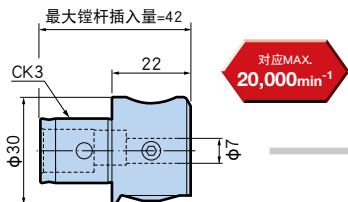
中心内冷

最适合小型机床

※ 镗杆的 部分为硬质合金制。

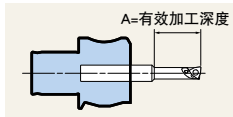
关于基础柄请参阅 **A71**

EWN04-15CK3 (小径镗系列)

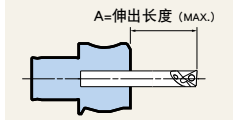


对应镗头 **EWN04-15CK3**
行程 -0.2 ~ +2.0mm

ST7W-EB 1~EB 7
ST7-RBE



ST7W-EB 8~EB12



- ST7W-EB 1 - 3
φ1.0~φ1.5
 - ST7W-EB1.5- 5
φ1.4~φ2.0
 - ST7W-EB 2 - 7
φ1.9~φ3.0
 - ST7W-EB 3 -10
φ2.9~φ4.0
 - ST7W-EB 4 -13
φ3.9~φ5.0
 - ST7W-EB 5 -16
φ4.9~φ6.0
 - WC 02刀片型
 - ST7W-EB 6 - 20
φ5.8~φ7.0
 - ST7W-EB 7 - 20
φ6.8~φ8.0
 - TP 07刀片型
 - ST7W-EB 8 - 20
φ7.8~φ9.0
 - ST7W-EB 9 - 20
φ8.8~φ10.0
 - ST7W-EB10 - 20
φ9.8~φ12.0
 - ST7W-EB12 - 30
φ11.8~φ15.0
- 极小径用整体式镗杆
 - ST7-RBE 1- 5
φ1.0~φ1.5
 - ST7-RBE 1.5-7.5
φ1.5~φ2.0
 - ST7-RBE 2- 9
φ2.0~φ3.0
 - ST7-RBE 3-14
φ3.0~φ4.0
 - ST7-RBE 4-17
φ4.0~φ5.0
 - ST7-RBE 5-22
φ5.0~φ6.0